

## KORG USB-MIDI Driver for Windows

The first time you connect the KORG USB MIDI Device to the USB port of your computer, the default USB-MIDI driver for Windows will be installed automatically. If you want to use the KORG USB-MIDI Driver for Windows, use the following procedure to reinstall the driver.

The driver must be installed separately for each USB port you use. If you connect the KORG USB MIDI Device to a USB port different than the one you used when installing the KORG USB-MIDI Driver, you will need to reinstall the KORG USB-MIDI Driver using the same procedure.

- In order to install (or uninstall) the driver in Windows Vista, you must have Administrator privileges. For details, contact your system administrator.
- This driver is for Windows XP/Vista and Windows XP/Vista x64 Edition only. It cannot be used in Windows 95/98/Me.
- Both 64bit application and 32bit application can't access MIDI IN ports of the same USB MIDI Device simultaneously.
- The driver for Windows XP/Vista x64 Edition is a beta version. If any bugs are found, please report them to: [unsupportedsoftwarebugreport@korg.co.jp](mailto:unsupportedsoftwarebugreport@korg.co.jp).

We appreciate your bug reports so that we can refine our software in the future.

Please note that this address is for unsupported software only, so e-mail will NOT be responded to.

---

You can install/uninstall the KORG USB-MIDI Driver using the tools.

w [Installing the KORG USB-MIDI Driver using a tool](#)

w [Uninstalling the KORG USB-MIDI Driver using a tool](#)

If you want to install/uninstall the KORG USB-MIDI Driver manually, please see the following sections.

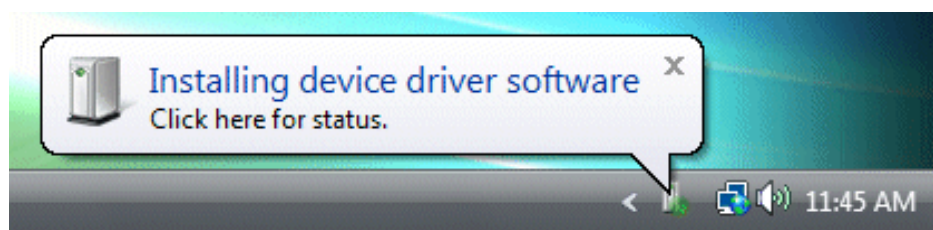
w [Installing the KORG USB-MIDI Driver manually](#)

w [Uninstalling the KORG USB-MIDI Driver manually](#)

---

### Installing the KORG USB-MIDI Driver using a tool

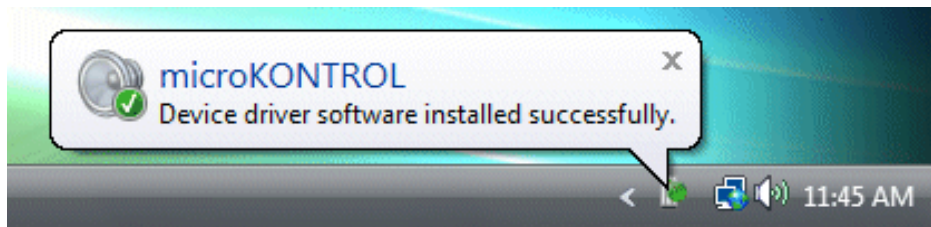
1. Use a USB cable to connect the KORG USB MIDI device to your computer, and turn on the power of it.



Windows will detect the connection with the KORG USB MIDI device.

Then the default driver will be installed.

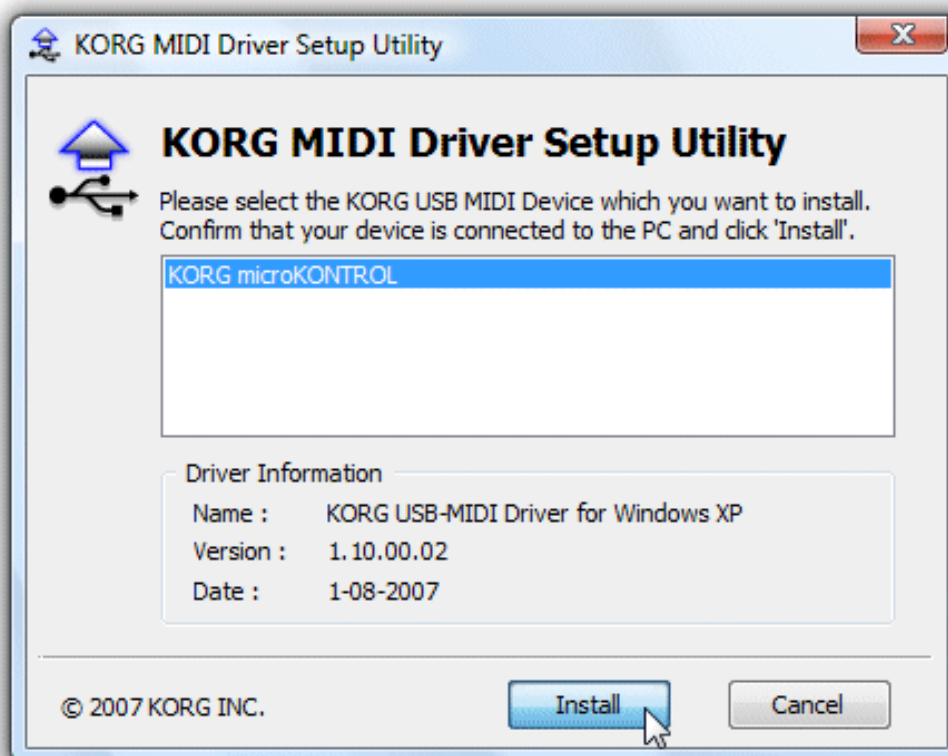
(Depending on the KORG USB MIDI device, the default driver will not be installed properly.)



2. Execute EzSetup.exe (start menu → All Programs → KORG → KORG USB-MIDI Driver Tools → Install KORG USB-MIDI Device).

The list in the upper part of the window shows the KORG USB MIDI devices that are currently connected to your PC. The lower area shows the software version of the KORG USB-MIDI Driver you are about to install.

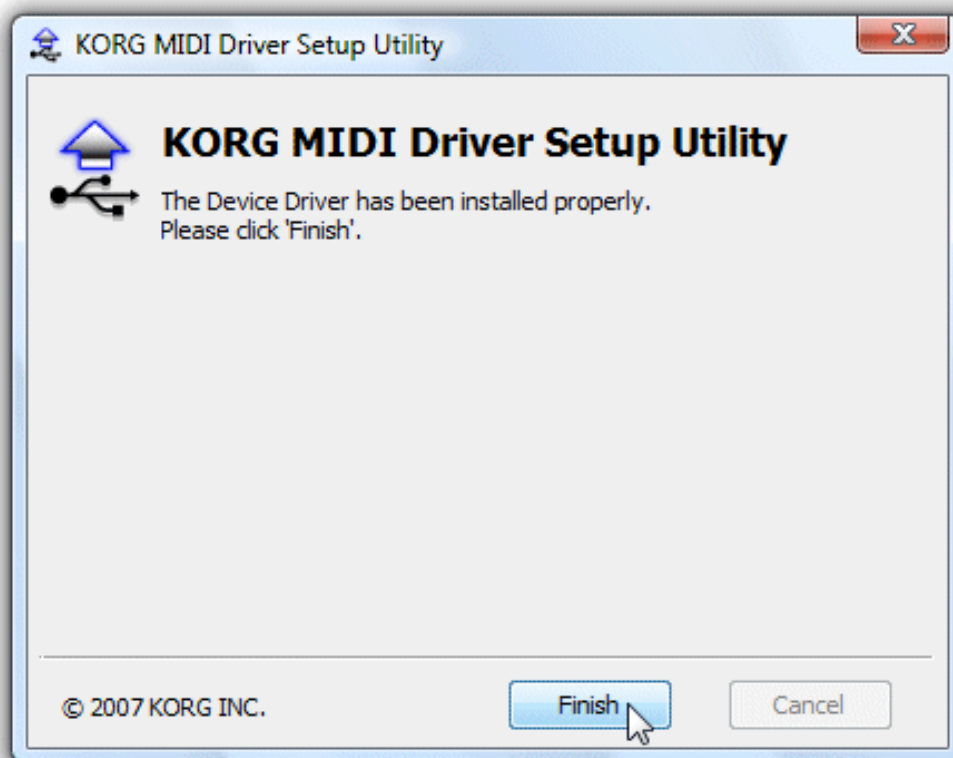
From the list, choose the KORG USB MIDI device that is currently connected to your PC, and click *Install*. Driver installation will begin.



3. In the "Would you like to install this device software?" field, click **Install**.  
If you add a check mark to "Always trust software from "Korg Inc.", this dialog will not appear again.  
KORG USB-MIDI Driver will be installed without your confirmation.



4. When the dialog box indicating that installation is completed appears, click **Finish**.



If a dialog box recommends that you restart Windows, click **Yes** to restart.

## n Uninstalling the KORG USB-MIDI Driver using a tool

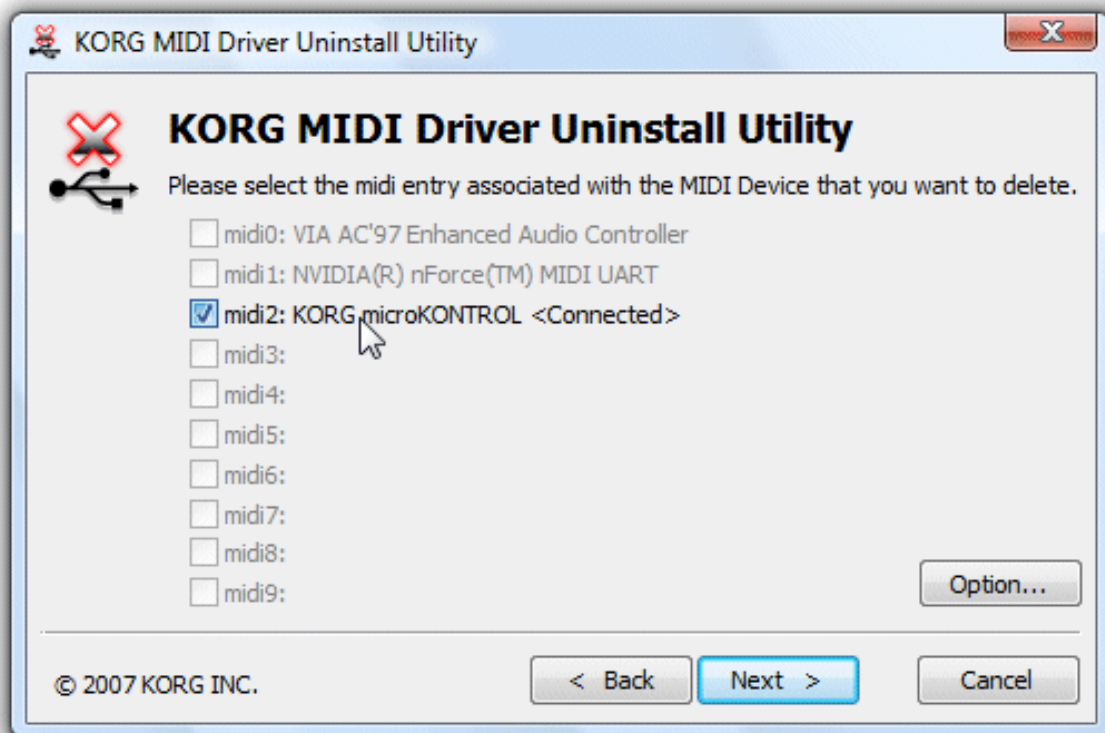
1. Execute UnInstDrv.exe (start menu → All Programs → KORG → KORG USB-MIDI Driver Tools → Uninstall KORG USB-MIDI Device).



Click *Next*.

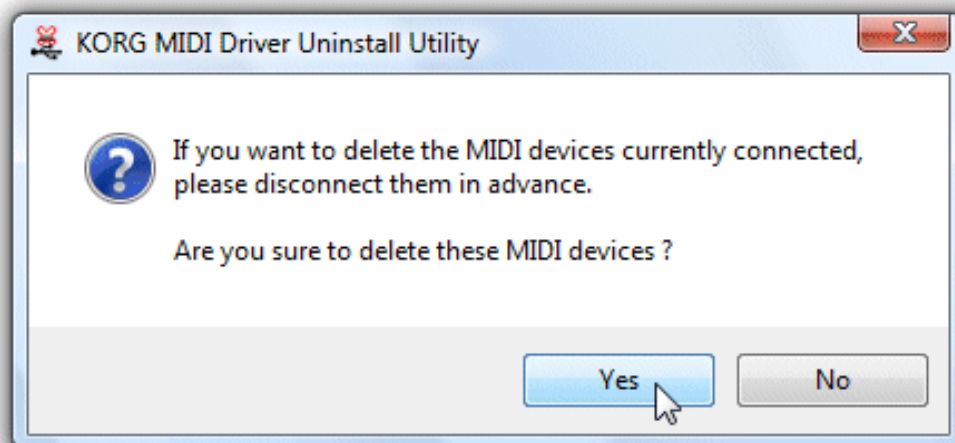
2. A list of currently installed KORG MIDI devices will be displayed.  
**Add a check mark only to the MIDI device you want to remove.**

**Be aware that all MIDI devices with a check mark will be removed.**



Click *Next*.

3. A dialog box will ask you for confirmation.



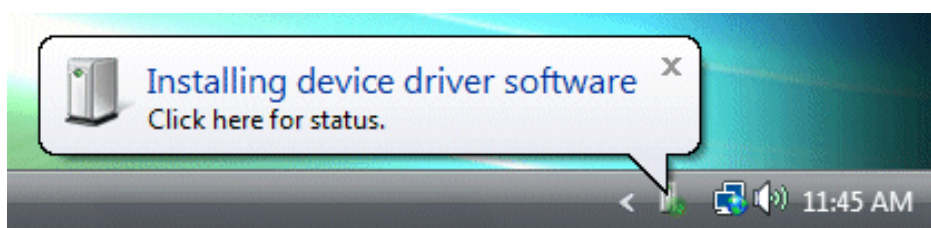
Click *OK*.

4. Click *Finish* to complete the procedure.



## n Installing the KORG USB-MIDI Driver manually

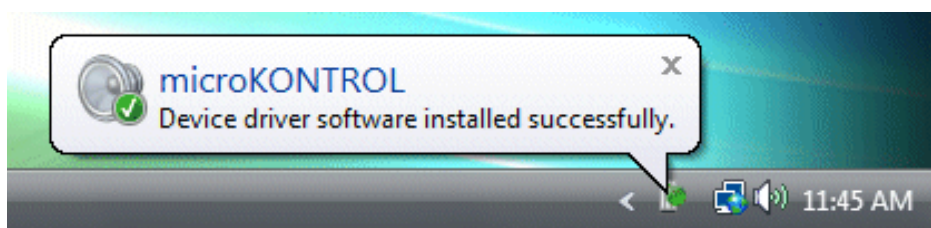
1. Use a USB cable to connect the KORG USB MIDI device to your computer, and turn on the power of it.



Windows will detect the connection with the KORG USB MIDI device.

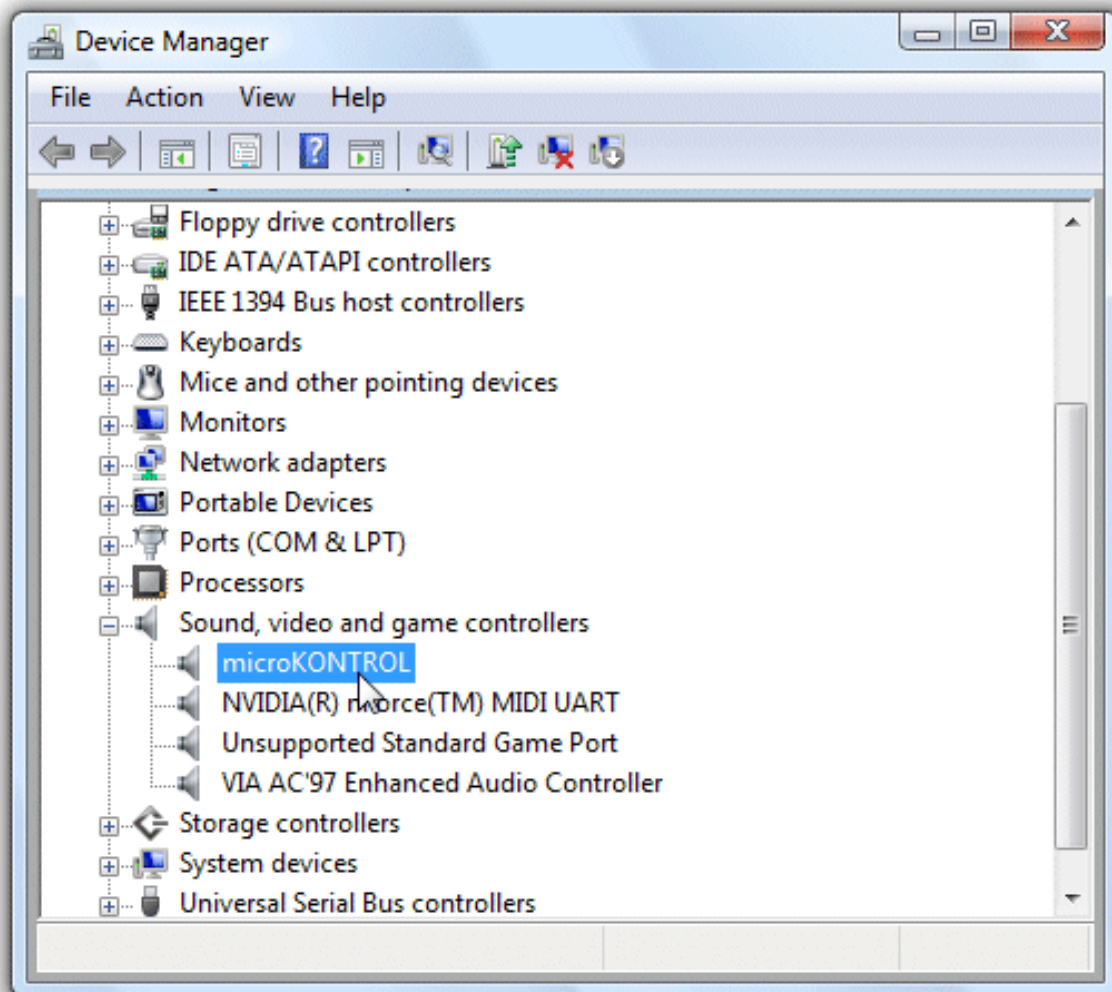
Then the default driver will be installed.

(Depending on the KORG USB MIDI device, the default driver will not be installed properly.)

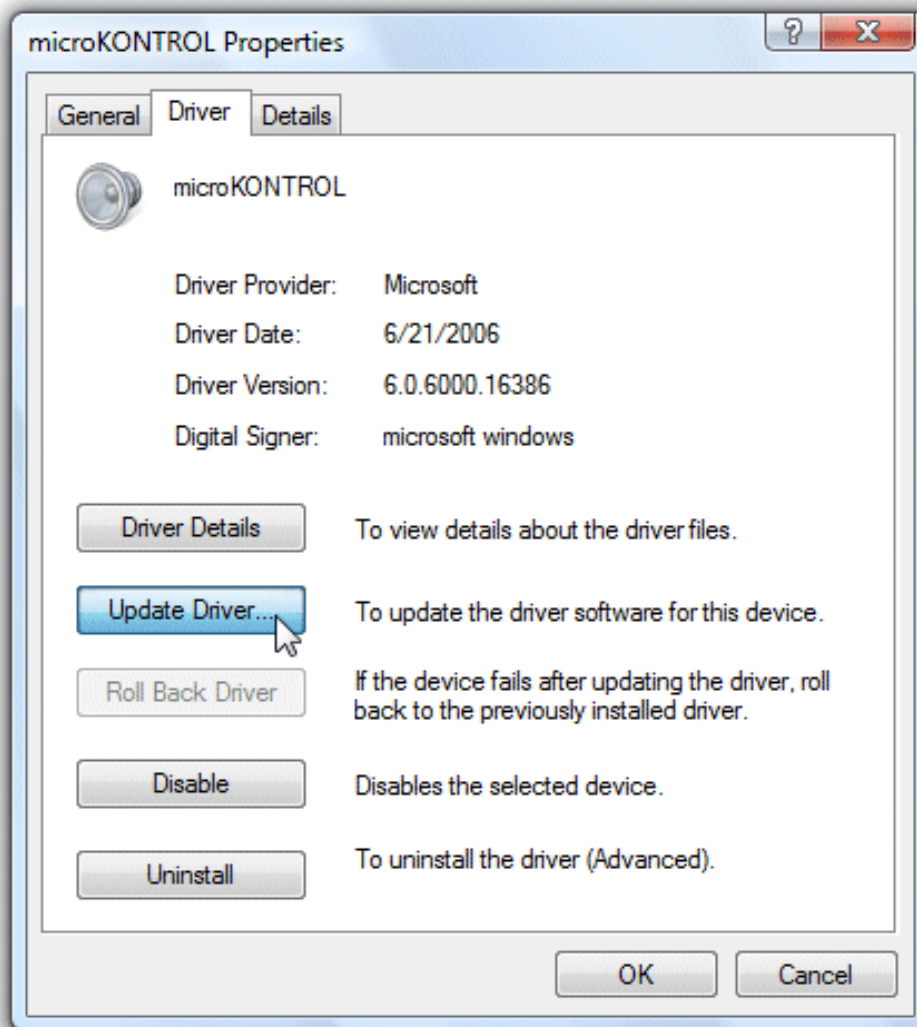




2. From the taskbar, click *Start* and then click *Control Panel* to open the Control Panel. From the Control Panel, start up *Device Manager*, and click the *Sound, video and game controllers* to open the section. From the list of devices, select the name of the KORG USB MIDI device and double-click it to open the *Properties* dialog.

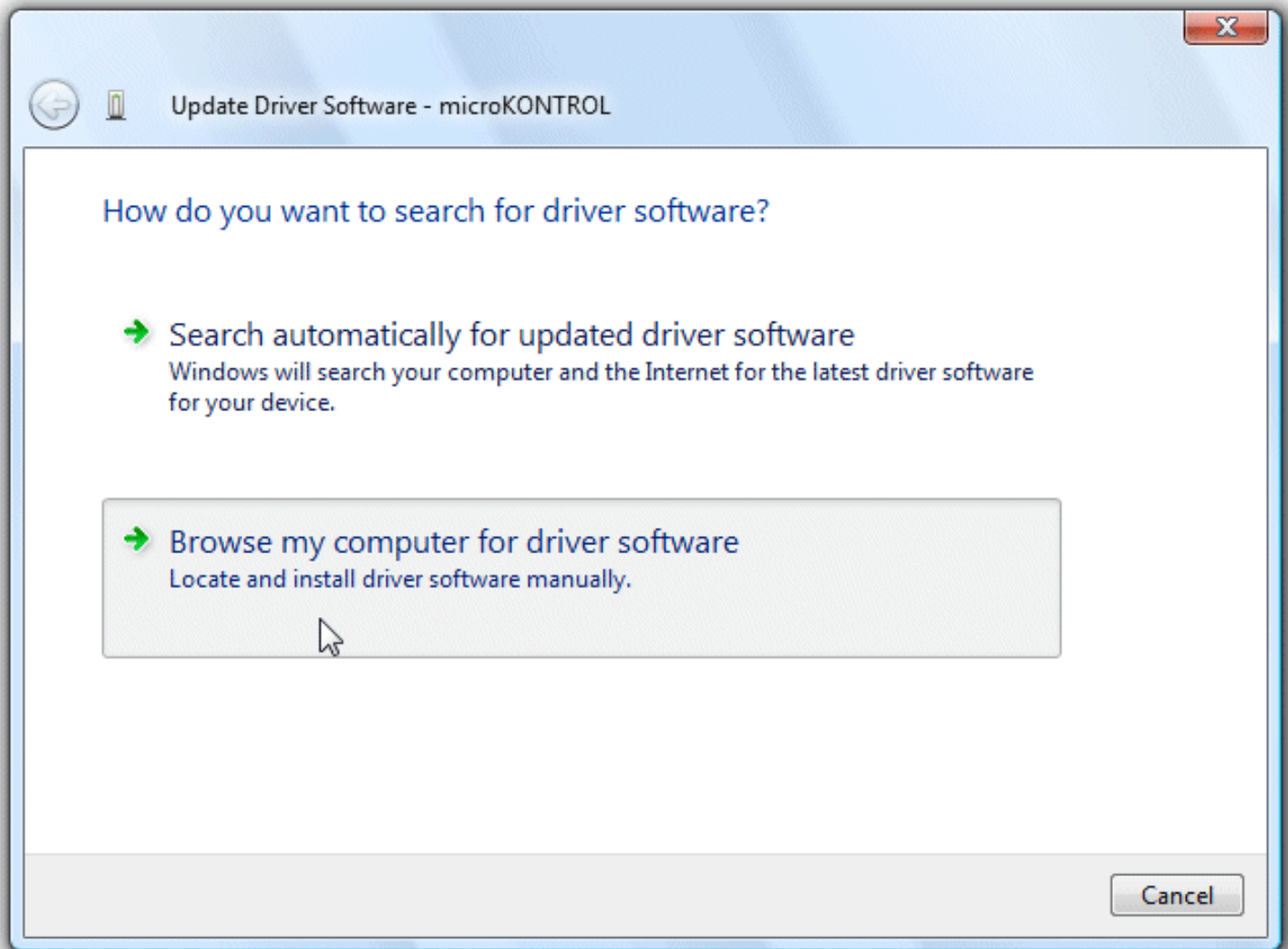


3. The Properties dialog box will appear. Click the *Driver* tab, and then click the *Update Driver* button.

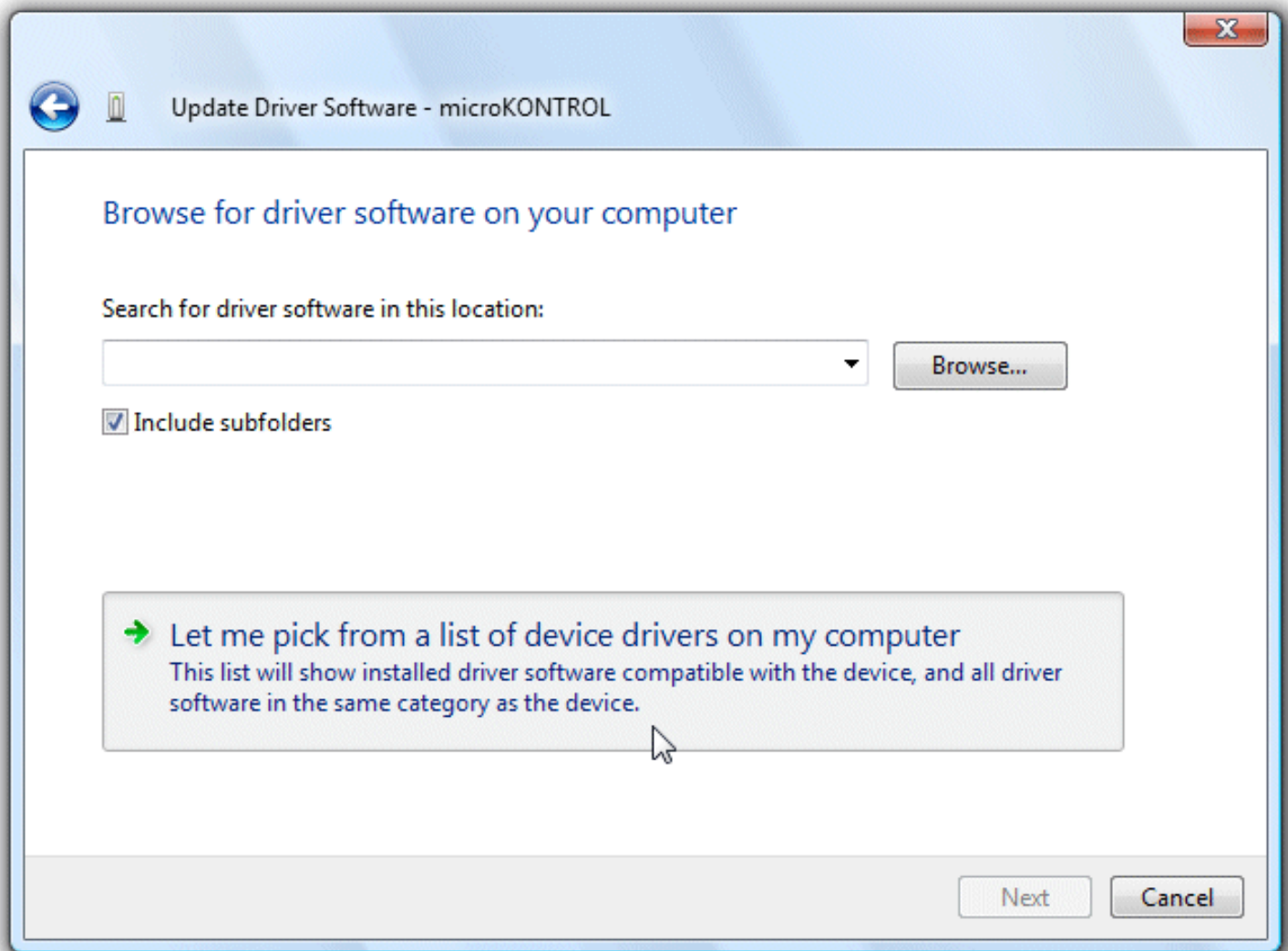


4. In the "How do you want to search for driver software?" field, click "***Browse my computer for driver software***".

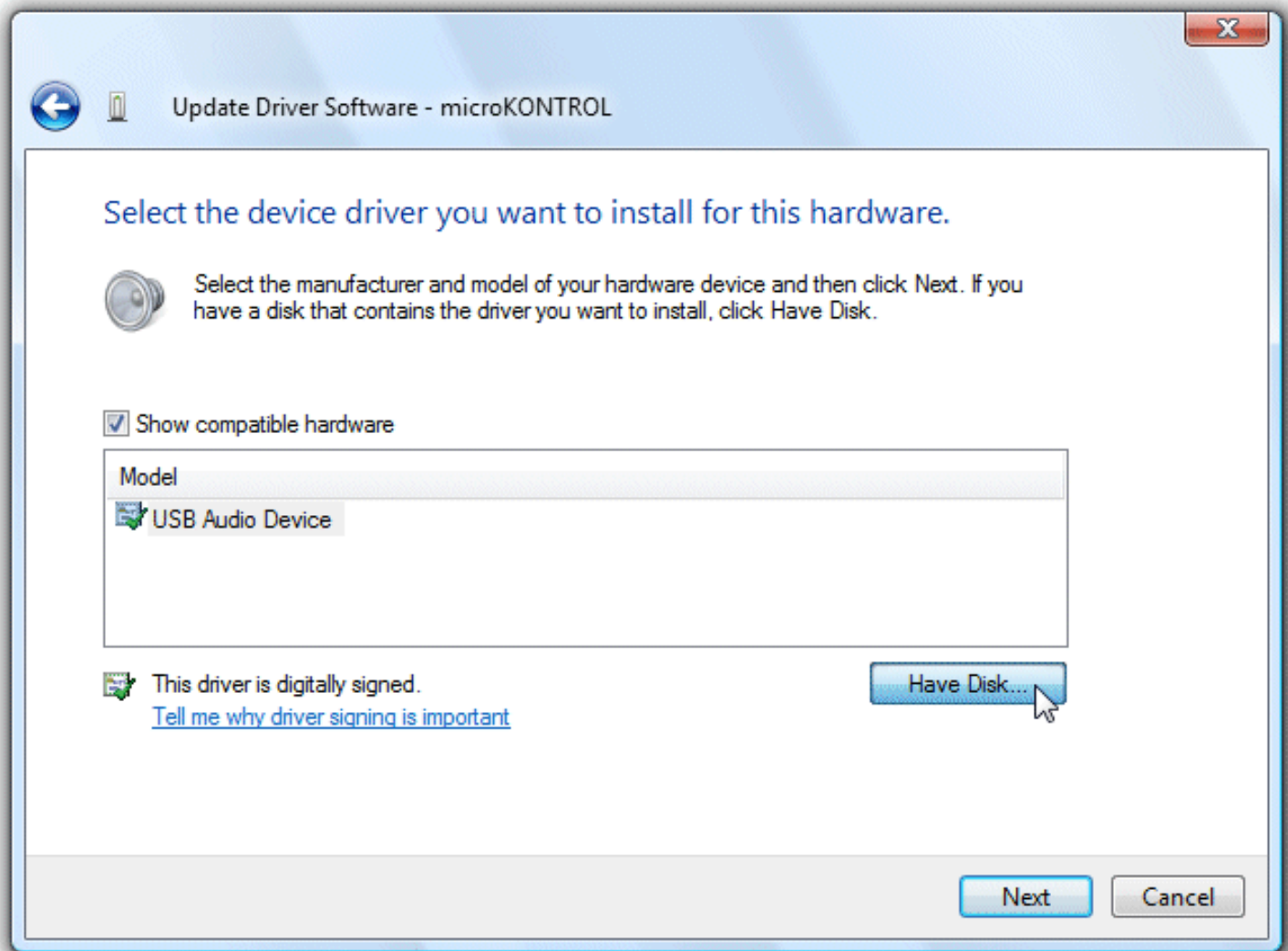




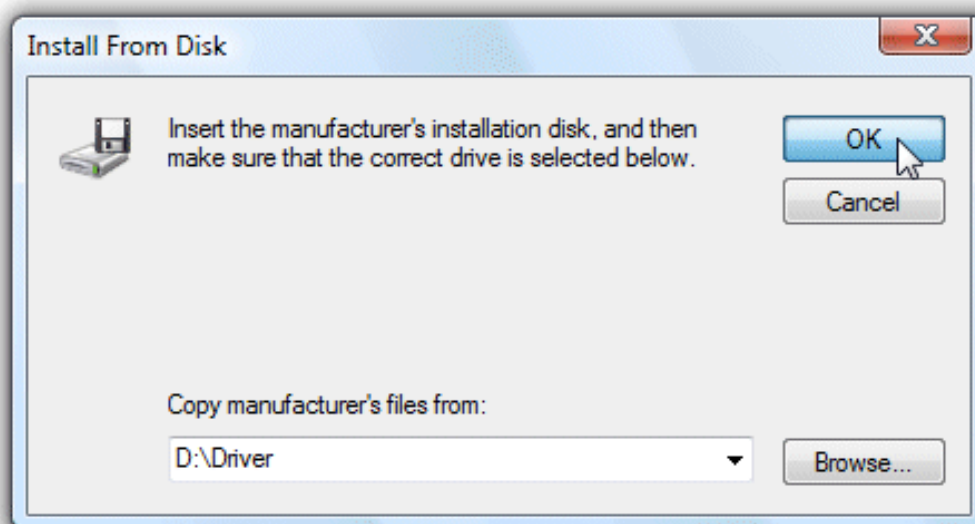
5. In response to "Browse for driver software on your computer", click "*Let me pick from a list of device drivers on my computer*".



6. In response to "Select the device driver you want to install for this hardware," click the ***Have Disk*** button.



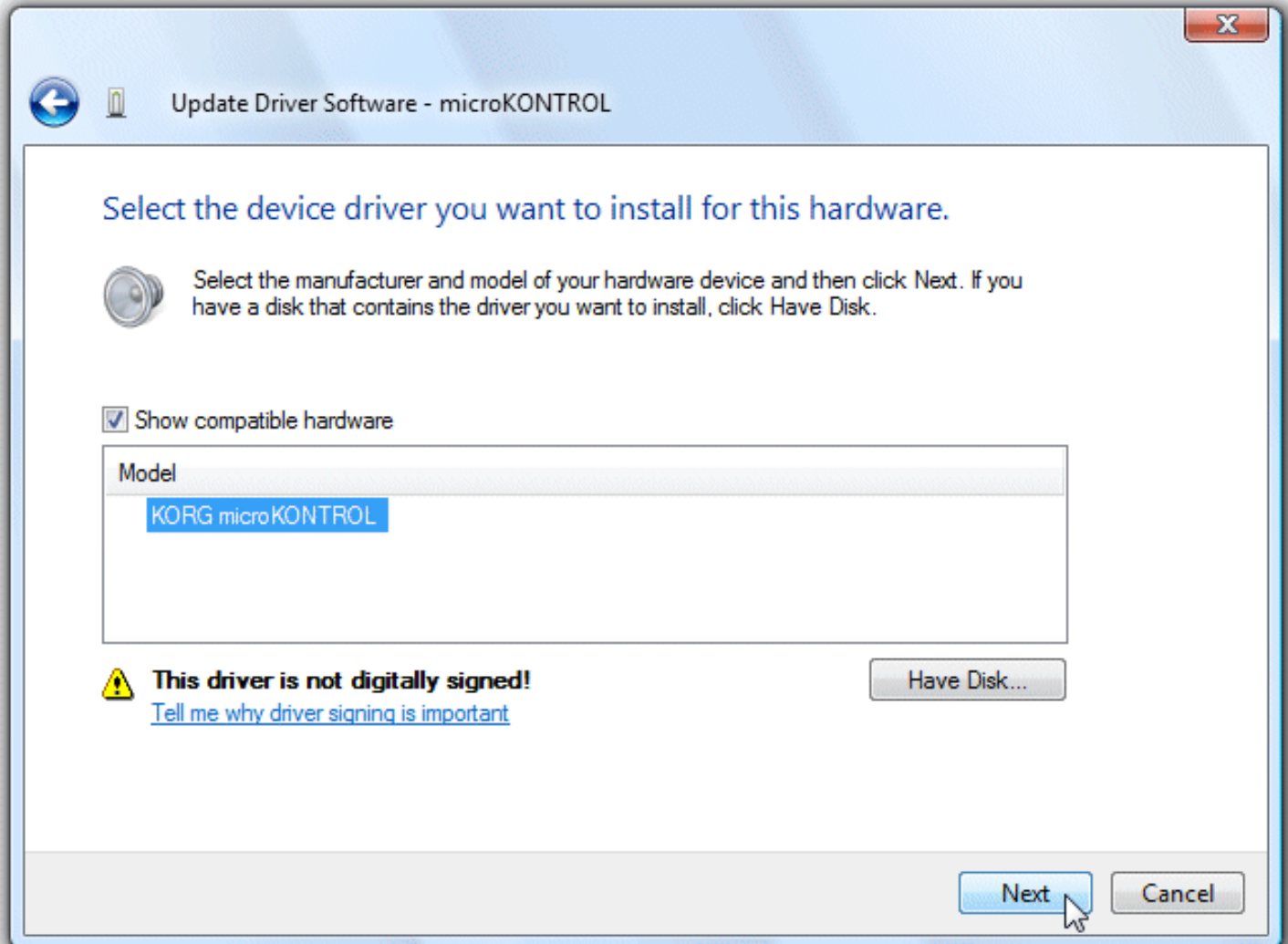
- You will be asked for the name of the folder. Insert the CD-ROM included with the KORG device into your CD-ROM drive. Then type the name of the folder D:\Driver that contains the KORG USB-MIDI Driver, and click the *OK* button.



This example is for when your CD-ROM drive is drive D. You will need to change this as appropriate for your

computer system; for example, if your CD-ROM drive is drive E, then replace D: with E: in the folder name you type.

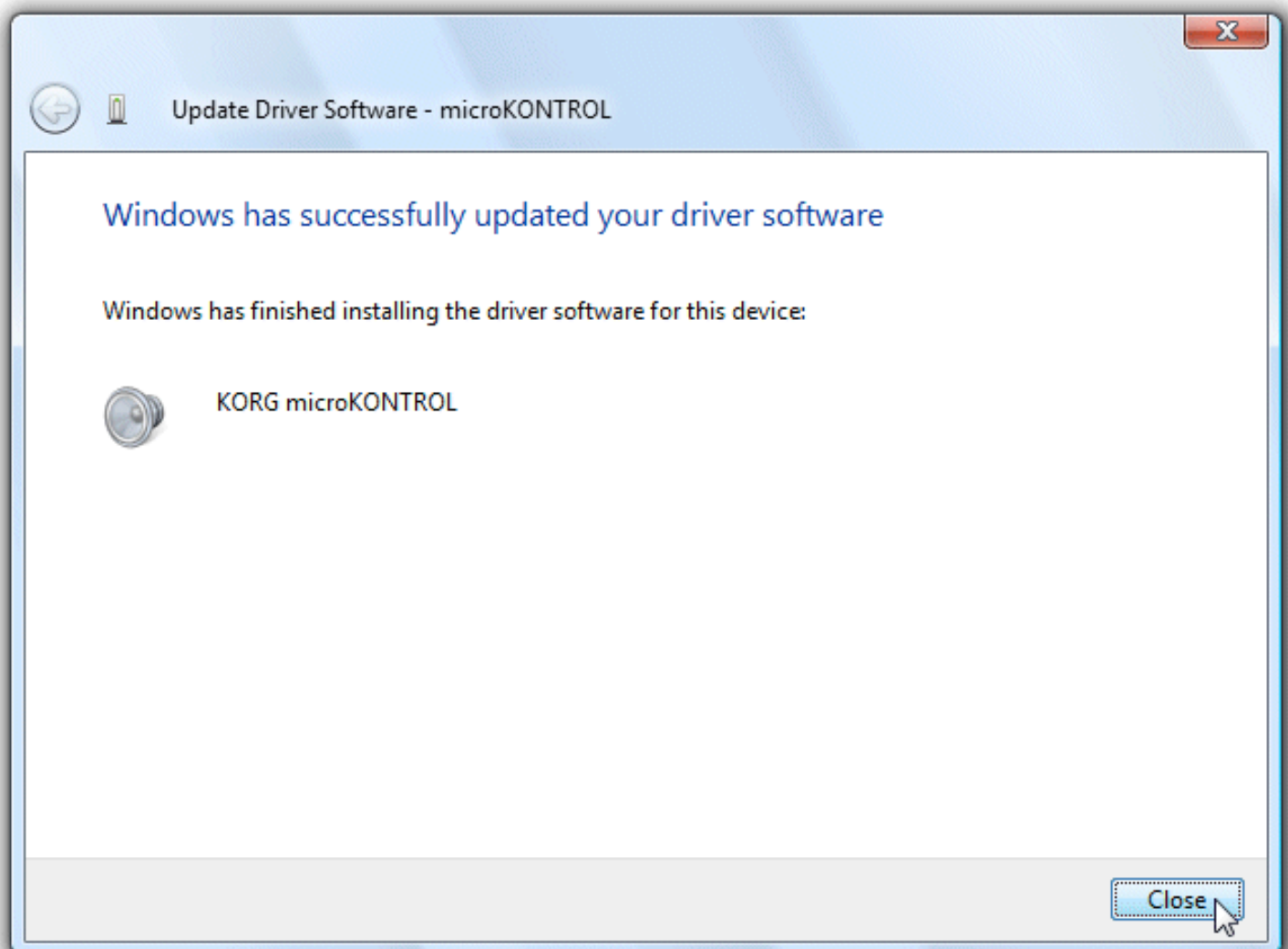
8. Make sure that the name of the KORG USB MIDI device you want to install is displayed as the Model, and click *Next* to begin installing the driver.



9. In the "Would you like to install this device software?" field, click ***Install***.  
If you add a check mark to "Always trust software from "Korg Inc.", this dialog will not appear again.  
KORG USB-MIDI Driver will be installed without your confirmation.



10. When the dialog box indicating that installation is completed appears, click *Finish*.

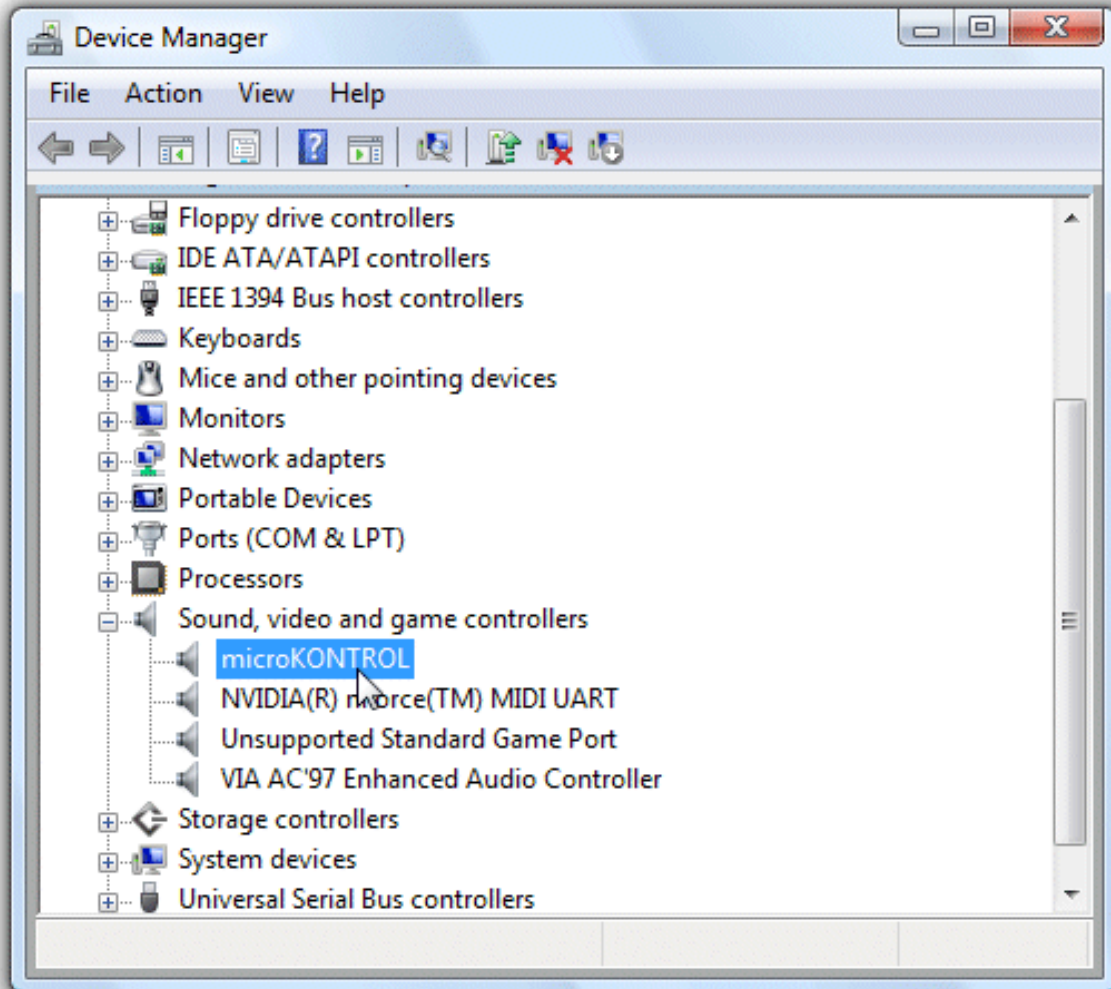


If a dialog box recommends that you restart Windows, click *Yes* to restart.



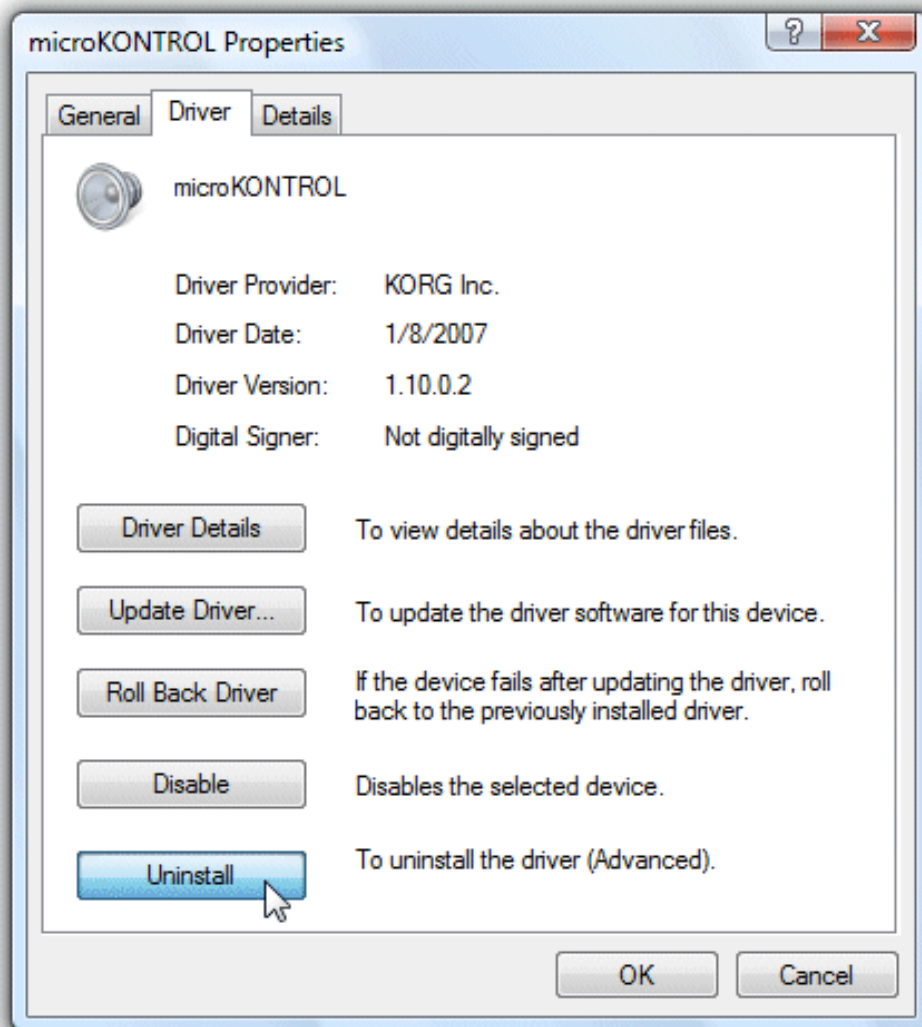
## n Uninstalling the KORG USB-MIDI Driver manually

1. From the taskbar, click *Start* and then click *Control Panel* to open it.  
From the Control Panel, start up *Device Manager*, and click *Sound, video and game controllers* to open the section.  
From the list of devices, select the name of the KORG USB MIDI device and double-click it to open the *Properties* dialog.



2. The Properties dialog box will appear.  
Click the *Driver* tab, and click the ***Uninstall*** button.





3. A dialog box will ask you for confirmation.  
Click the *OK* button.



Copyright 2007 Korg Inc.